



STUDENT CLUSTER COMPETITION 15 TEAM

TUM *uchPhun*

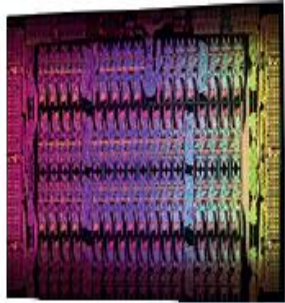
FROM THE TECHNICAL UNIVERSITY OF MUNICH

BASED ON

RSC



PetaStream[®]



PROCESSOR

- Intel® Xeon Phi™
- 61 cores, 244 threads @ 1.24 GHz
- >1.2 TFLOPS peak performance

x1
→



COMPUTE NODE

- Intel® Xeon Phi™ 7120P
- 16 GB of RAM
- 64 Gbps IO bandwidth

x8
→



COMPUTE MODULE

- 2x4 compute nodes
- 2.4 TB SSD Hard Drive
- DC 400V power system

OVERALL PERFORMANCE

- ▶ 488 cores, 1952 hardware threads
- ▶ 11 TFLOPS peak performance
- ▶ 128 GB GDDR-5 RAM
- ▶ 3030 W (3120W allowed)

SPONSORED BY:



Inspiring innovations
www.rscgroup.ru



GCS
Gauss Centre for Supercomputing

